

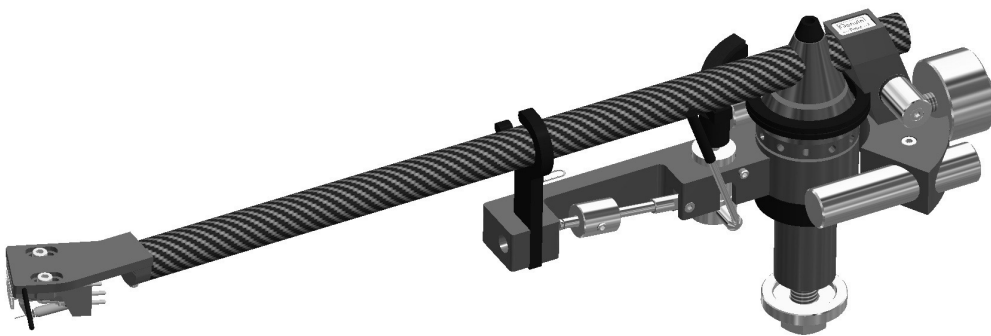
Operation Manual



Technical Description

## Point

Unipivot Tonearm



## **Welcome to the world of natural music playback!**

We would like to thank you for choosing a high-end product from Genuin Audio.

Genuine Audio manufactures audio components that are exclusively designed for Genuin and made under factory conditions in Germany. The devices uncompromisingly pursue the goal of an authentic reproduction. Only the inner values are important. The inside matters.

Please note: this highly advanced product requires a careful initial configuration in order to make its superior quality noticeable. Please follow carefully all necessary steps laid out in this manual.

### **Scope of Delivery**

1 x tonearm Genuin Audio Point  
1 x anti-skating string weight  
1 x stainless steel pin (see VTA setting)

Please check the contents of the package immediately after receipt for missing parts and possible shipping damage.

## Installation

Carefully remove the tonearm Point from the wooden box and place it with the bearing tip on the unipivot bearing of the tonearm base mounted in the drive. Then insert the LEMO plug of the tonearm cable from the tonearm into the LEMO socket next to the tonearm base.

## Installation of the Cartridge

The tonearm is correctly set with a mounted Sting cartridge. You only have to check the tracking force with the help of a separately obtainable tonearm scale.

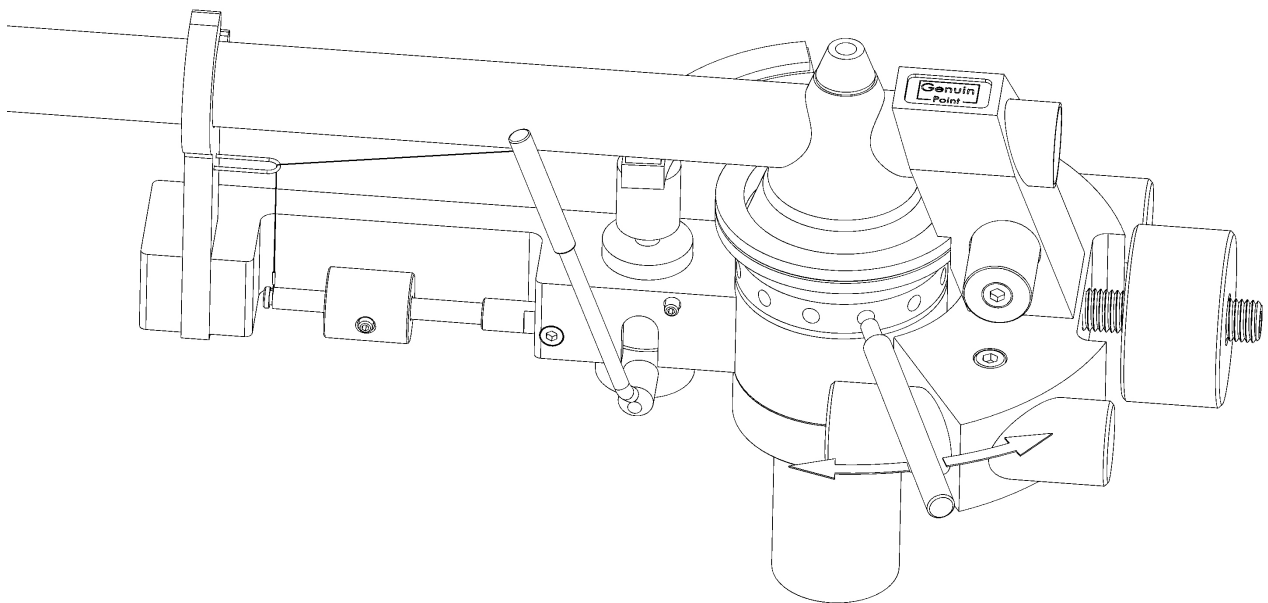
To mount an alternative cartridge, proceed as follows:

Mount the selected cartridge onto the head shell and plug the 4 color-coded wires to the left / right terminals of the cartridge respectively.

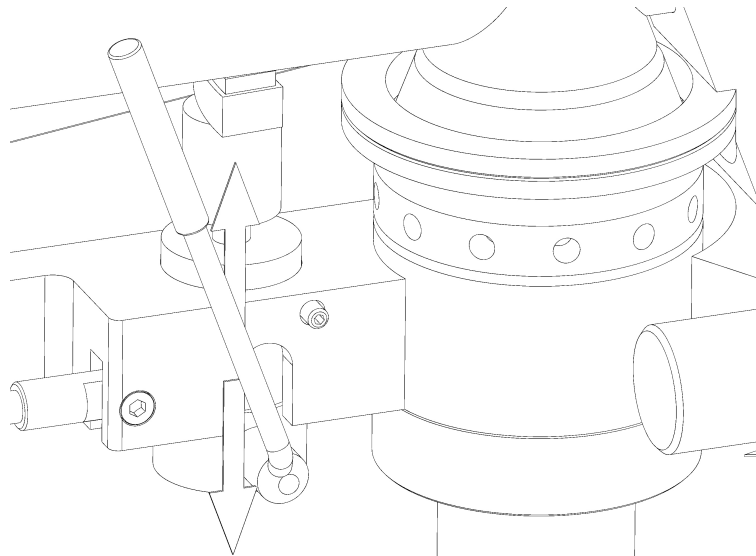
Adjust the overhang and offset angle according to the 10" geometry. Use an alignment guide of your choice, for example the popular Schön-templete.

## VTA

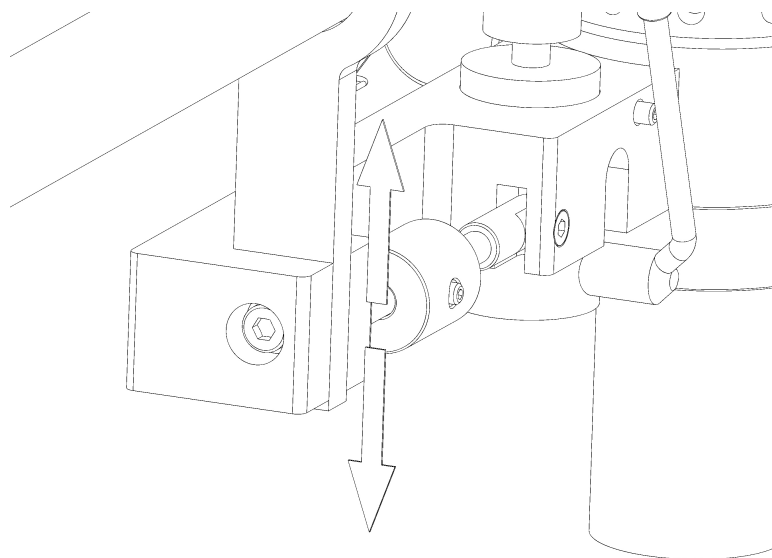
Aim the VTA (Vertical Tracking Angle) so that the tonearm tube is aligned parallel to the plate. The VTA is adjusted by turning the base screw with the supplied pin, which is inserted into a corresponding hole of the bolt circle to turn the base.



After setting the VTA the lift must be adjusted. To do this, unscrew the side clamping screw with an Allen key and tighten it again after setting the lift position.



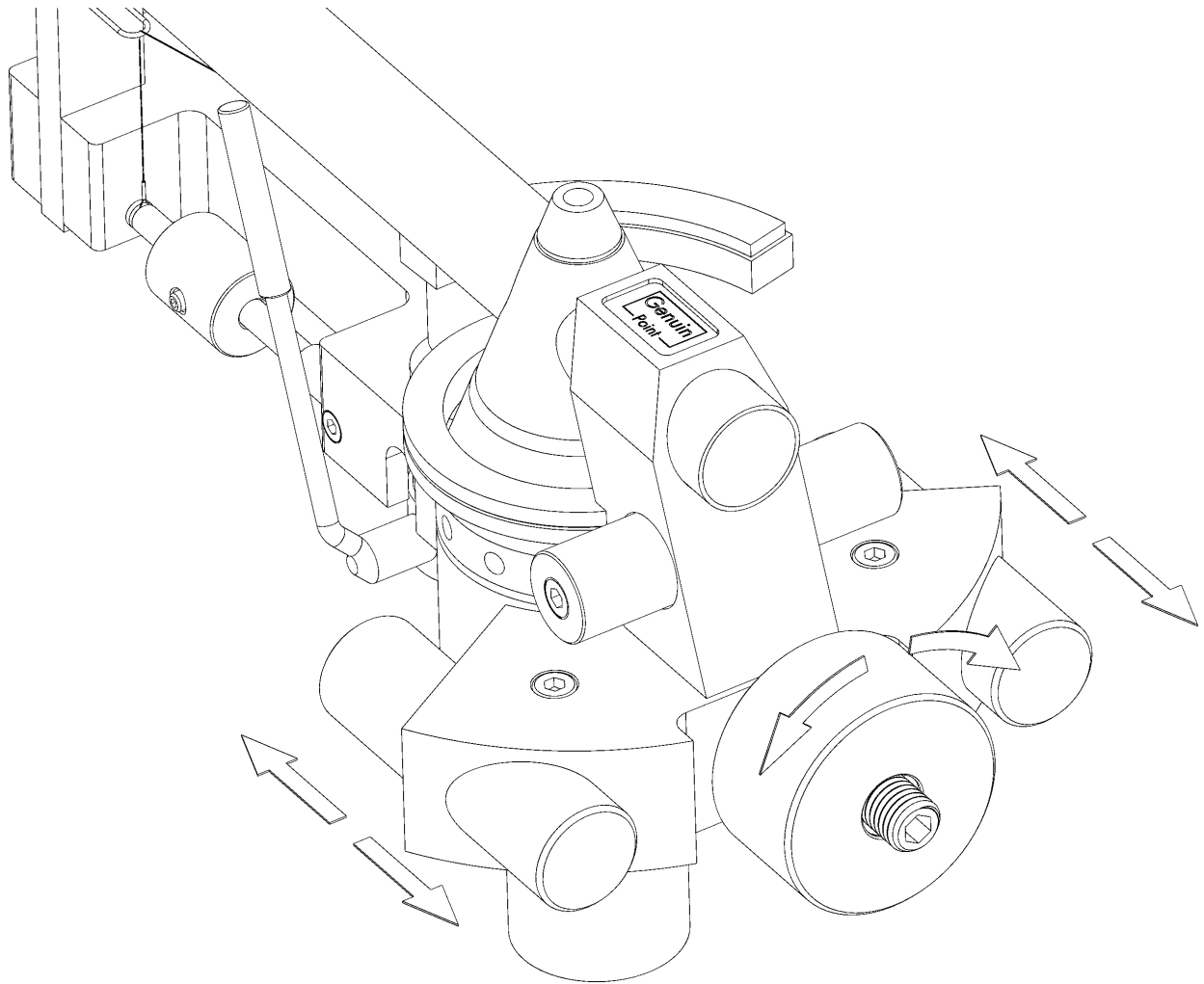
The arm rest for the tonearm tube is adjusted accordingly after loosening the end-face Allen key, and the screw is then tightened again.



### Tracking force

Turn the counterweight at the end of the tonearm so that it is approximately 10 mm apart from the arched support.

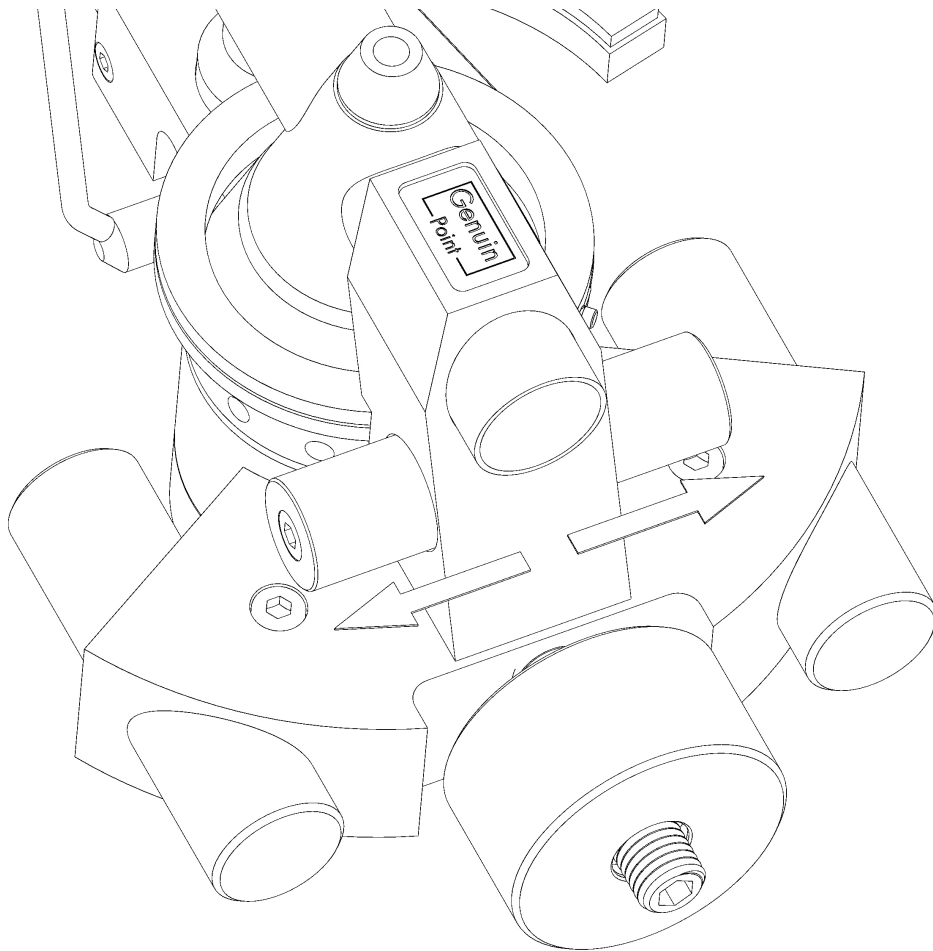
Then move the two lateral cylindrical base weights until the tone arm floats horizontally. Carefully loosen the two clamping screws on the upper side of the arched support and tighten them again as carefully without great force.



By turning the counterweight back you can adjust the tracking weight suitable for the cartridge. Then the counterweight should be as close as possible to the pivot point of the tonearm. If there is still a large distance to the support (= more than 2-3 mm), repeat this configuration process, but start with a distance of less than the previously set 10 mm.

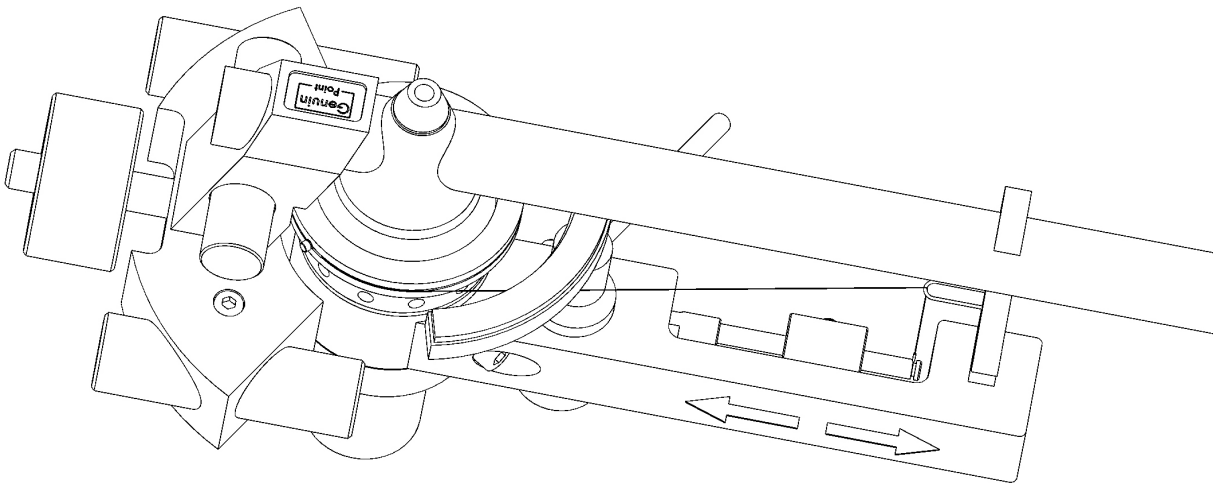
## Azimuth

Check the azimuth to ensure a horizontally balanced position. In this case, refer more to the stylus and less to the system body. If necessary, turn the transverse weight until the needle stands perpendicular in the groove.



## Anti-Skating

Attach the anti-skating string to the tonearm as well as to the anti-skating lever, tying it through the deflection loop on the tonearm support. Anti-skating is adjusted by shifting the weight on the anti-skating lever. The closer the weight is to the string, the stronger the effect.



Adjust the anti-skating force correctly according to your measuring method, for example with the help of a special test record.

Depending on experience and preferences, the VTA, tracking force and anti-skating can be adjusted until the desired sound result is achieved.

## Information

### Technical Specifications

Further technical specifications are available on the website [www.genuin-audio.de/en/](http://www.genuin-audio.de/en/).

### Safety Instructions

Do not operate the unit in places where it is exposed to extreme heat or moisture.  
This will avoid the risk of electric shock or fire.  
Check the local mains voltage before operation.  
Do not remove the cover.

### Service

There are no user-serviceable parts inside the unit.  
Always leave repairs to trained professionals. Warranty will be void if the product has been handled by unauthorized persons. In case of repair, please contact Genuin Audio or your authorized dealer.

### Disclaimer

The information in this document is subject to change without prior notice and does not constitute any obligation on the part of Genuin Audio.

Genuin Audio assumes no liability for any errors in this manual.  
No part of this manual may be reproduced or transmitted in any form or by any means, electronically, mechanically, by photocopy or by videotape, without the prior written permission of Genuin Audio.

© Genuin Audio

Version 1.0  
August 2017

### Contact

Genuin Audio  
Byhlener Straße 1 - 03044 Cottbus - Germany  
Phone +49 (0) 355 38377808 - Fax +49 (0) 355 38377809 - Email: [info@genuin-audio.de](mailto:info@genuin-audio.de)

